

MARANGA MAI NGĀTI KUIA

He Iwi Pakohe, He Iwi Karakia



Pānui Images from: Melissa Banks and Keelan Walker.

TE PŪ - THE PAST

TUMU HERENGA WAKA

Earlier this month, we celebrated the launch of Tumu Herenga Waka, a kaupapa designed to grow Māori governance and leadership. Delivered by NMIT and guided by our own whanaunga, Mona-Pauline Mangakāhia-Bajwa, this Level 4 Certificate supports taurua to strengthen skills in ethical leadership, kaitiakitanga, financial management, and more – all through a kaupapa Māori lens, with a Tauihu context at the forefront. This course is now underway and we aim to offer this opportunity again in 2026.



DID YOU KNOW?

Did you know? Our Wairau office is called Te Tari Pakohe, a name that reflects our deep connection to pakohe - a significant taonga for Ngāti Kuia. Located in the heart of Blenheim, Te Tari Pakohe is open to all whānau who wish to connect, ask questions, or simply stop in for a kōrero. Our kaimahi, Raymond and Ngaire, are based there and always happy to help. The tari is typically open weekdays from 8:30am to 2:00pm. Nau mai, haere mai.

APICULTURE - HIVE TO HONEY

Our current level 3 apiculture class recently celebrated a major milestone, harvesting over 150 kilograms of honey. It has been an incredible journey for our tauira, who have built their own hives, cared for their bees, and learned the full process of honey production. We are proud of the dedication and hard work that has gone into their achievement. Expressions of interest are now open for our next intake of the Ngāti Kuia Apiculture course - please see the final page of this pānui for more details.



2

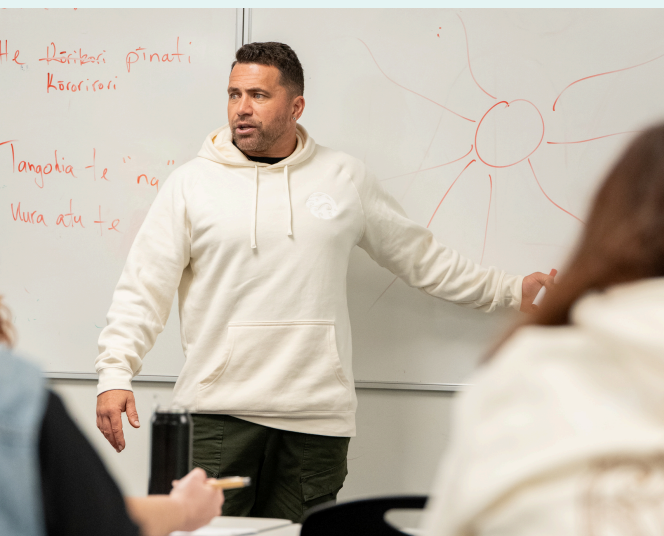


TE REO KIA REWA

E rere tonu ana ngā mihi ki a koutou katoa i haere mai ki Whakatū Marae i te wiki kua pahure ake nei ki te kai i tā te rangatira kai, ki te whakanui hoki i tō tātou Ngāti Kuitanga. 130 whānau of all ages came together in April for our annual wānanga to learn, grow, and celebrate the beauty of te reo Māori. Whether taking their very first steps or strengthening their reo, every voice contributed to this kaupapa that was filled with laughter, learning, and whakawhānaungatanga.

INTRODUCING NEW KAIMAHI

Kereana Norton has stepped into the Te Hora Marae Manager role with a commitment to ensuring that our whānau and manuhiri have the best possible experience at our marae. Kereana now oversees our bookings, liaises with whānau, and supports tangihanga and wānanga. Kereana will also work closely with the Komiti Marae, kaimahi and will oversee operations as needed. We look forward to the mahi ahead with Kereana at the helm, ensuring Te Hora Marae remains a thriving space for our people. You can reach Kereana directly at: Kereana@ngatikuia.iwi.nz



We welcome Shep Hēpara as the new Manager for the Whare Tipuna project at Te Hora Marae. An uri of Ngāti Kuia, Shep brings deep cultural grounding and a strong commitment to honouring whakapapa throughout every stage of the build. We are at the beginning of this significant project and will be engaging with whānau across the motu over the course of the plan. Shep shares: "This mahi is a privilege and opportunity to support our whakapapa, stories, and aspirations. My focus is to ensure the build embodies the mana of our iwi, engaging with Tohunga and whānau to lead this project. He mahi rangatira tēnei kia whakairia ō tātou taonga tuku iho ki ngā kokonga o te whare." You can reach Shep directly at shep@ngatikuia.iwi.nz.

EVENTS

WĀNANGA TUKUTUKU #3

May 16, Mangarākau

MATARIKI

20 June

Taku Kara Tipuna

WĀNANGA O KAIKAIĀWARO

21 June

KAI TAHI

22 June

Te Hora Marae

TE WHAKATAU

Labour Weekend

Te Hora Marae

RAUMATI KAUMĀTUA

11 December

Te Hora Marae

RAUMATI TAMARIKI

13 December

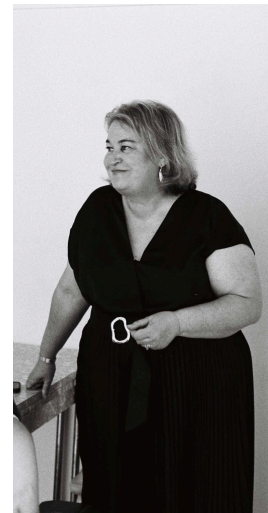
Titiraukawa

INTRODUCING NEW KAIMAHI...

Dr. Margaret Kempton

Kaituhi Tahua Pūtea | Technical Writer

Based in Whakatāne, Margaret brings experience in research and evaluation, particularly in kaupapa Māori contexts, and currently works across the motu. Margaret will play a key role in providing support across our Rūnanga and identifying funding opportunities, as well as preparing applications, proposals, milestone reports, and project tracking. Margaret is reconnecting with her Ngāti Kuia whakapapa, and we are grateful to have her skills and passion strengthening our mahi.



Bailie Duff, Kaituhi Taiao | Graduate Planner

With a Postgraduate Diploma in Sustainable Management from Te Pūkenga, Bailie brings a passion for protecting and enhancing te taiao. In her role, Bailie will review resource consent applications to identify matters of interest or concern to Ngāti Kuia, and contribute to wider taiao projects. A proud māmā of two young daughters, Bailie is deeply committed to the wellbeing of our whenua and future generations.

Matawai Winiata, Amo Tītoki | Te Reo Māori Strategy Lead

Matawai is no stranger to the Rūnanga, you may remember her mahi as kaiako at Kura Reo and coordinating the recent Te Reo Kia Rewa. Matawai is a passionate te reo Māori advocate. She shares that her greatest joy is helping people grow in their reo, and feels a strong connection to her mother's Ngāti Kuia whānau, with a desire to contribute to the aspirations of our Rūnanga. Now in her second year of a Master's in Te Reo Māori and soon to be a licensed translator, she is a strong addition to our Rūnanga.



MATARIKI WEEKEND Te Hora Marae WĀNANGA O KAIKAIĀWARO

We are busy preparing the Sites of Significance tour for Ngāti Kuia whānau on Saturday 21 June.

This is an opportunity to reconnect with our whakapapa whenua, hear the stories of our tīpuna, and grow our understanding of the landscapes that shape our identity. Contact: hina@ngatikuia.iwi.nz

KAI TAHI

Join us for a day of reconnection and kai at Te Hora Marae on Sunday 22 June.



APICULTURE - BEE COURSE

Join the next intake of our Ngāti Kuia Apiculture Level 3 course. This fully funded, hands-on course is designed to support whānau of all learning backgrounds and help is available if you are worried about the academic side. Over nine months, you will receive your own hive and gear, learn the full beekeeping process, and have the option to gain your Level 3 Certificate through NMIT. Spaces are limited – register your interest now.

Starts August 2025

nicole@ngatikuia.iwi.nz



TATAKA TE PUA

Join us in Whakatū every Monday and Wednesday for Tataka te Pua, where our tamariki learn about their tīpuna and kōrero tuku iho through play, waiata and pūrākau. Last month, they dressed up in beekeeping gear and explored the world of te aitanga o pēpeke (insects) up close by observing a living hive. Next terms focus will be Atua Māori. Bring your mokopuna and be part of it. Contact: jaime@ngatikuia.iwi.nz



Kia rite mō te hōtoke. Free vaccinations for those who want them. Kai provided. Saturday 31 May, 10 am – 1 pm at our Whakatū Tari, 192 Rutherford Street. Flu, COVID, Shingles, Boostrix, and MMR available. RSVP for catering purposes to nicole@ngatikuia.iwi.nz.

SORT IT. SAVE IT. GROW IT. KAURUORA.NZ

